



Proposed Development of an Updated  
Facility for the

# National Wildlife Health Center

Madison, Wisconsin

---

Public Meeting

July 18, 2024

# Introductions



- **C. LeAnn White**, *NWHC Director*
- **Michael D. Bonds**, *NWHC Safety & Environmental Program Coordinator*
- **Jordan D. Sizemore**, *NEPA Project Manager*
- **Martin T. Smith**, *Chief, Project Management Branch*



- **Jessica Forbes**, *Deputy Project Manager*
- **Paulina Lopez**, *Public Involvement Manager*



# Meeting Purpose

- Provide information regarding the Proposed Action to develop an updated facility for the National Wildlife Health Center (NWHC) in Madison, Wisconsin
- Provide an overview of the analysis in the Draft Environmental Impact Statement (EIS)
- Invite comments and questions concerning the proposed action and Draft EIS

# NWHC Facility Today

Only national center devoted to advancing wildlife health science; designated a “mission essential” facility.

**Location:**  
6066 Schroeder Rd  
Madison, WI 53711



# Challenges Facing the National Wildlife Health Center

- Proactive efforts to repair systems and facilities to maintain operational status have provided short-term solutions.
- Continual renovations are impractical and cost prohibitive.
- NWHC age and space limitations are affecting ability to perform its mission.

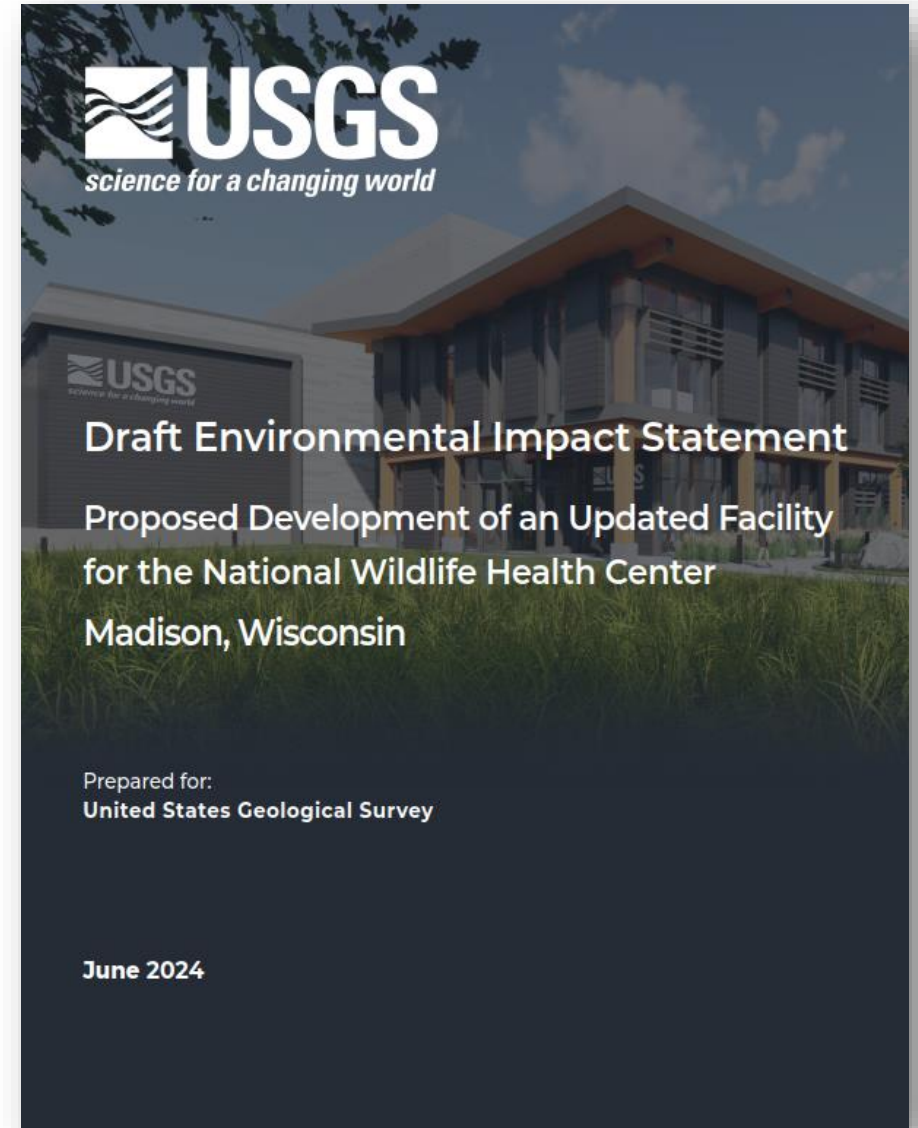


- Crowded labs and admin areas
- Inefficient use of space
- Aging buildings, equipment, and infrastructure
- Increasing costs of operation and maintenance

# What's included in the Draft EIS?

- Background and context for Proposed Action
- Purpose and need for an updated facility
- Existing environmental conditions
- Considers alternatives, including the No Action Alternative
- Potential environmental effects of the alternatives
- Summary of public outreach activities
- Technical appendices

**The Notice of Availability for the Draft EIS was published June 14, 2024.**





# Proposed Action

The Proposed Action is to develop an updated facility for the NWHC. The Proposed Action would:

- Support the NWHC's current and future needs to streamline delivery of research
- Enhance worker and public safety
- Enhance animal care conditions
- Modernize biohazard and pathogen containment and biological waste disposal
- Improve operating efficiencies

*Concept Renderings – New NWHC, USGS, 2024*



# Purpose & Need

The NWHC needs facilities that:

- Provide functional space for administration and operations and meet health and safety standards and regulatory requirements.
- Allow for adequate space needed to conduct research into wildlife disease detection, enhance ability to meet unique needs of animal care, and strengthen other programs that support the mission of the NWHC.
- Utilize modern laboratory equipment and mechanical systems necessary to implement best operating and management practices.



# Preferred Alternative

- Preferred Alternative is development of a new NWHC on the current NWHC property in Madison, Wisconsin
- Construction of a new facility would allow for USGS to:
  - Provide sufficient lab space
  - Install modern, more efficient, and secure building envelope technologies
  - Modernize biological waste disposal systems
- Current NWHC would continue operating during construction of the new facility, and both buildings would be demolished once the new facility is operational.

# A new NHWC will:



**Streamline**  
delivery of research



**Enhance efficiency**  
For worker and public safety  
with modern equipment



**Manage costs**  
Through more efficient  
operations

# No Action Alternative



- The No Action Alternative involves maintaining the current operating conditions at the NWHC in Madison, Wisconsin without any changes or new facilities.
- While the No Action Alternative would avoid potential environmental impacts associated with new NWHC development and operation, adoption of the No Action Alternative would also result in the loss of the benefits associated with the Proposed Action.



# Draft EIS Resource Topics

---

Topography, Geology, and Soils

---

Water Resources

---

Biological Resources

---

Cultural Resources

---

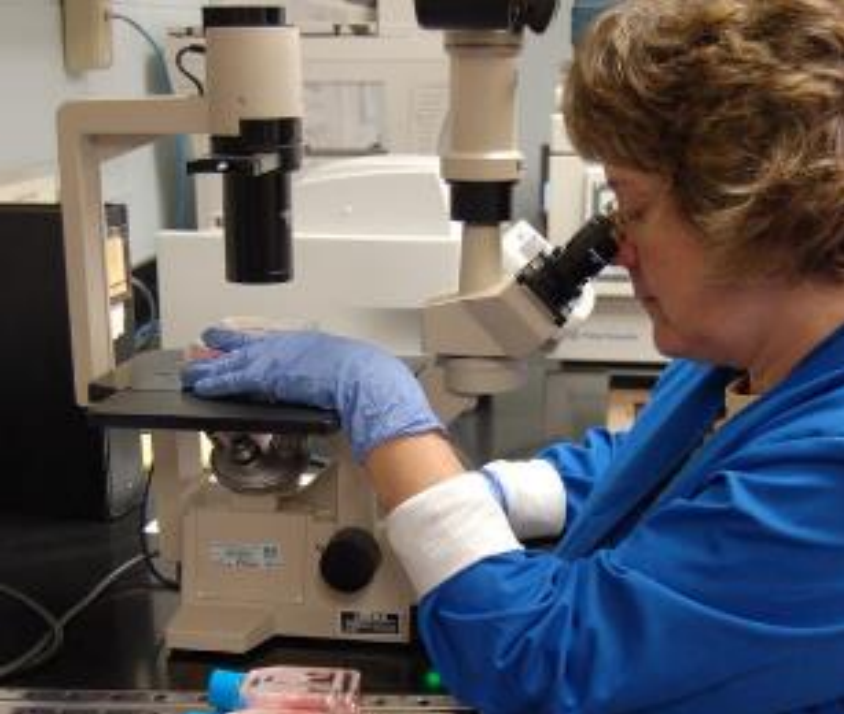
Hazardous Materials

---

Visual and Aesthetic Resources

---

Demographic, Economic, and Housing Characteristics



# Draft EIS Resource Topics (cont.)

---

Environmental Justice

---

Land Use

---

Community Facilities and Services

---

Utilities

---

Transportation Systems

---

Air Quality

---

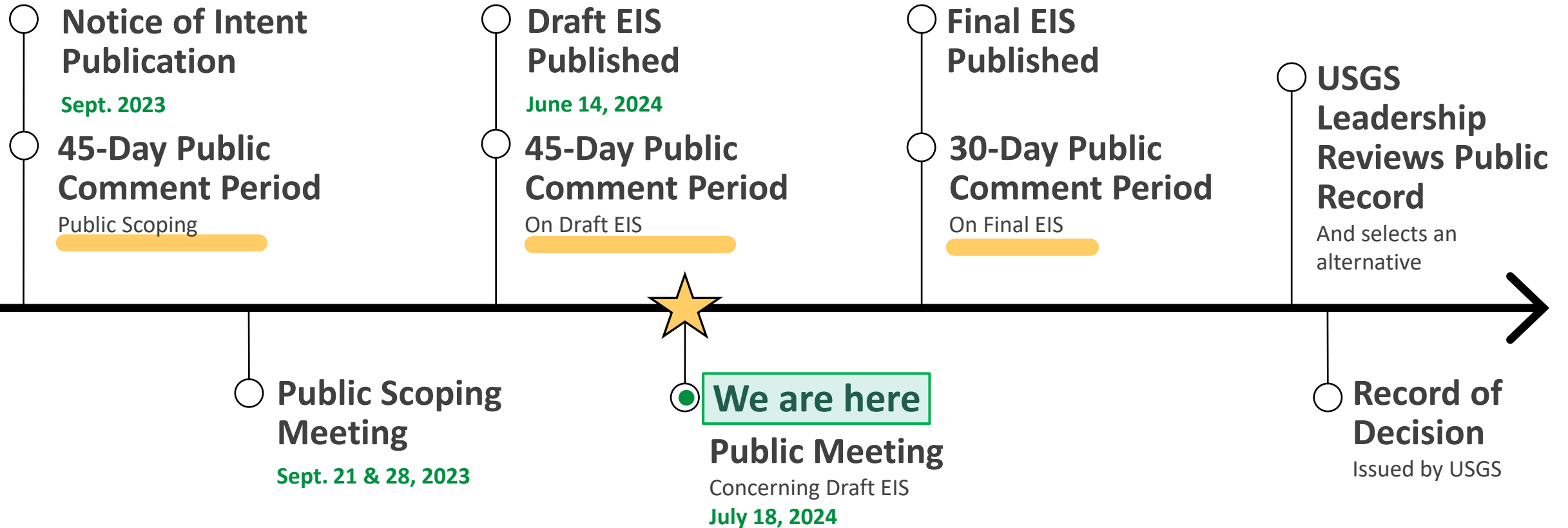
Noise

# Environmental Findings

- Construction and operation of the Preferred Alternative (new NWHC) would result in temporary impacts to air quality and noise, and temporary and long-term impacts to topography, soils, biological resources, visual and aesthetic resources, and land use.
- Impacts primarily would occur on the NWHC property, with some temporary effects in nearby neighborhoods during construction (i.e., noise, additional traffic). Impacts would be mitigated through design measures or best practices implemented during construction.



# Project's NEPA Schedule



# NWHC EIS Project Website:

- Provide a central location for project-related information
- Provide access to meeting notices, the Draft EIS and associated documents, announcements, recordings, etc.
- Provide means to submit comments, questions, join email list, receive EIS notifications, etc.

[www.nwhceis.com](http://www.nwhceis.com)



## National Wildlife Health Center

Environmental Impact Statement

- Home
- Proposed Action
- EIS Process
- Environmental Impact Statement
- Public Involvement
- FAQs
- Photo Gallery
- Contact Us

### Public Scoping

Watch this space for information on the upcoming public scoping period, including ways you can participate. Your input is a vital part of the National Environmental Policy Act process!

[Learn More](#)

### Welcome

Welcome to the U.S. Geological Survey's (USGS's) website for the National Wildlife Health Center (NWHC) Environmental Impact Statement (EIS)! The USGS is preparing an EIS for the proposed development of a new NWHC in Madison, Wisconsin. This website provides information on the EIS process, the proposed action, and opportunities to get involved and provide comments.

[Learn More](#)







# Media Representatives

Media inquiries can be submitted by email to the Public Affairs Specialists with USGS Central States Office of Communication:

- Gina Gray: [glgray@usgs.gov](mailto:glgray@usgs.gov)
- Allie Weill: [aweill@usgs.gov](mailto:aweill@usgs.gov)



A photograph of a modern USGS building with large glass windows and an American flag on the left. The text 'Thank You!' is overlaid in white on a dark green background.

**Thank You!**

---



[www.nwhceis.com](http://www.nwhceis.com)

